

South Indian River Water Control District

Amended Water Control Plan

Project number: 60193938

July 17, 2025

Prepared for: South Indian River Water Control District

Prepared by:

Karen D. Brandon, PE
Associate Vice President
M: 561-719-4308
Email: karen.brandon@aecom.com

AECOM
2090 Palm Beach Lakes Boulevard, Suite 600
West Palm Beach, FL 33409
aecom.com

I hereby certify, as a Professional Engineer in the State of Florida, that the information in this Amended Water Control Plan was assembled under by direct responsible charge. The certifying Engineer cannot be responsible for added or deleted information once distributed. This report is not intended or represented to be suitable for any reuse without specific verification or adoption by the Engineer, This Certification is provided in accordance with the Florida Board of Professional Engineers' Rule on Certification under Chapter 21H-29.

Karen D. Brandon, P.E.
FL PE No. 38579

Copyright ©2025 by AECOM

All rights reserved. No part of this copyrighted work may be reproduced, distributed, or transmitted in any form or by any means without the prior written permission of AECOM.

Table of Contents

Contents

Introduction	4
Water Control Plan	4
List of Exhibits	9
Exhibit 1 – District Boundary Map	10
Exhibit 2 – Taxing Units	11
Exhibit 3 – Land Use Map	12
Exhibit 4 – Organizational Chart	13

Introduction

Chapter 298.225 requires that the board of supervisors of each water control district develop or revise the district's water control plan to reflect the following minimum standards. Chapter 298.225 (3) states:

- (3) Each water control plan for a district or unit must contain, if applicable:
- (a) Narrative description of the statutory responsibilities and powers of the water control district.
 - (b) A map delineating the legal boundary of the water control district and identifying any subdistricts or units within the district.
 - (c) Narrative descriptions of land use within the district and all existing district facilities and their purpose and function, and a map depicting their locations.
 - (d) Engineering drawings and narrative sufficient to describe each facility's capacity for the management and storage of surface water and potable water supply, if applicable.
 - (e) A description of any environmental or water quality program that the water control district has implemented or plans to implement.
 - (f) A map and narrative description of any area outside the water control district's legal boundary for which the district provides services.
 - (g) Detailed descriptions of facilities and services that the water control district plans to provide within 5 years.
 - (h) A description of the administrative structure of the water control district.
 - (i) Copies of any agreements between the water control district and other governmental entities (limited to water resource agreements)
 - (j) The engineer's report prepared for plan adoptions or revisions.
 - (k) The water control district's budget and revenue sources for the current year.

Pursuant to Chapter 298.225(4), "information contained within a district's facilities plan prepared pursuant to s.189.415 which satisfies any of the provisions of subsection (3) may be used as part of the district water control plan." Accordingly, where applicable, reference to portions of South Indian River Water Control District's Public Facilities Report will be used and considered to be part of this document.

Water Control Plan

The Board of Supervisors of the South Indian River Water Control District (the "District") authorized the District Engineer to prepare this Amended Water Control Plan. The following information is presented as set forth in Chapter 298.225 (3):

(a) District Statutory Responsibilities and Powers

The District is organized and exists under Chapter 298, Florida Statutes, as amended and supplemented, and other applicable provisions of law, including a number of special acts of the Florida Legislature relating to the District particularly Chapter 2001-313, Laws of Florida which serves as the Charter for the District. The District is responsible for the management of water resources and drainage, protection and reclamation of land within the District. In furtherance of said purposes and pursuant to Chapter 298, Florida Statutes, the special acts relating to the District, the District's Water Control Plan and any prior Plan of Reclamation, the District has been granted the authority over all or portions of the lands within its boundaries for the construction, operation and maintenance of water control facilities and the construction and maintenance of roadways. In addition, the District has

been granted the authority within the District lying East of Canal 18 of the South Florida Water Management District, and to the Northeast Quarter of the Northeast Quarter plus the North one-half of the Southeast Quarter of the Northeast Quarter of Section 1, Township 41 South, Range 41 East, in Palm Beach County for the construction of public water distribution and wastewater collection facilities and the maintenance of lands for parks and recreation purposes. The District owns, constructs, operates and maintains works of the District, regulates their use by others, acquires, maintains and sells machinery and equipment, contracts for the construction, operation and maintenance of the works of the District by others and controls, condemns or otherwise acquires lands. Works of the District include rights-of-way for canals, ditches and swales, levees, dikes, sluices, culverts, gated and un-gated structures. Plenary powers to acquire, operate, maintain and manage District works are granted by Section 298.22, Florida Statutes.

(b) Map of Legal Boundary of Water Control District and Sub Districts

The legal boundary of South Indian River Water Control District is described in the Public Facilities Report and is shown on Exhibit 1. South Indian River Water Control District is generally divided into two (2) taxing units, the East and West basins. A Map of the taxing units is included as Exhibit 2.

(c) Land Use and Existing Facilities

The majority of the lands within South Indian River Water Control District are currently zoned AR, Agricultural/Residential. A Land Use Map is included as Exhibit 3.

(d) Engineer Drawings and Description of Facility's Capacity

Engineering plans and narrative descriptions of facilities used for the management and storage of surface waters are included in the Public Facilities Report (2025).

(e) Environmental and Water Quality Program

South Indian River Water Control District worked cooperatively for over ten plus years with the United States Geological Survey regarding the establishment and implementation of a Water Quality Monitoring Program throughout the District. This program included sampling of both groundwater and surface water at strategically located sampling sites within the District. Unfortunately, due to funding constraints, the United States Geological Survey had to discontinue the cooperative program with the District.

With many ecological and regulatory pressures being exerted over the Loxahatchee River Basin area, it was imperative that the District continue to sample and monitor water quality within its boundaries. In July 2011, the District entered a contract with a water sampling and testing firm. The samples are tested to analyze the surface water and groundwater for various organic and inorganic contaminants as well as water quality criteria parameters, such as nutrients.

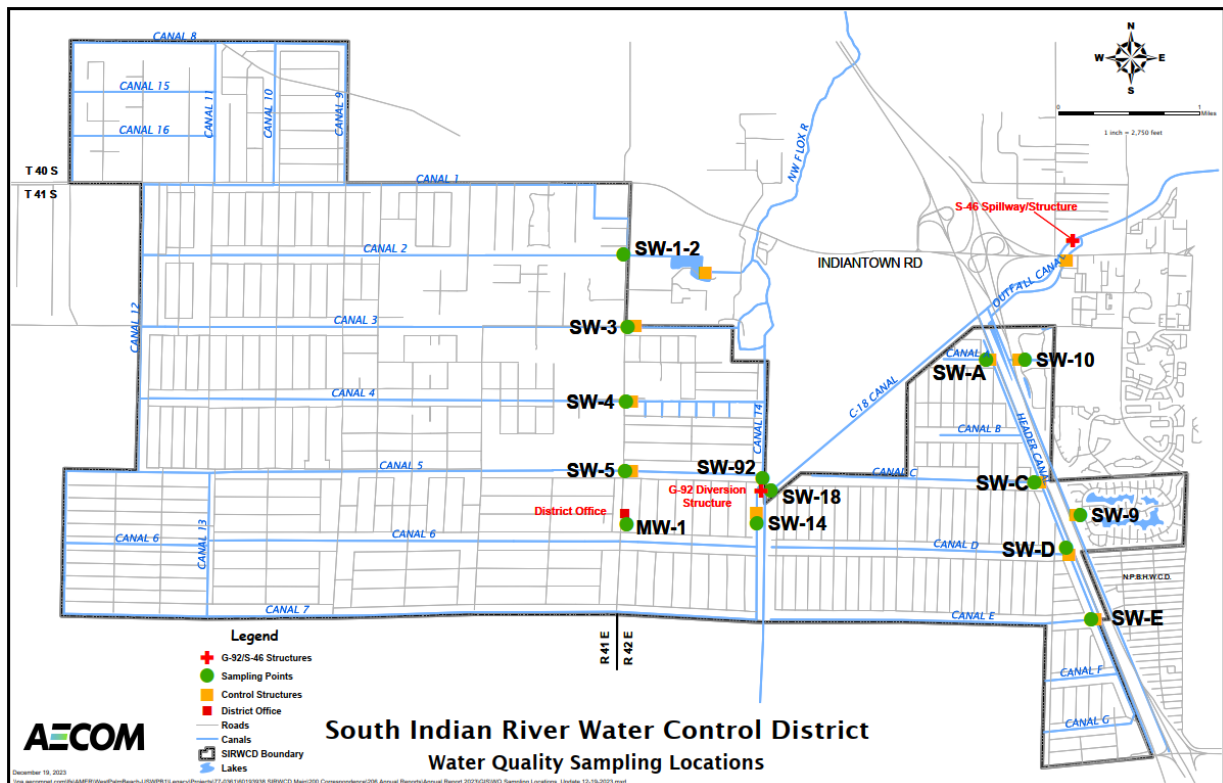
The current Water Quality Monitoring program includes general field parameters such as dissolved oxygen, color, pH, conductivity, etc. along with biological parameters such as phosphorus, nitrogen, etc., various major inorganic constituents and certain organic compounds. A detailed list of the monitoring parameters is presented in Table 1 below.

Table 1 - Water Quality Monitoring Parameters

Parameters	Parameters	Parameters
Alkalinity	E.coli	Total Kjeldahl Nitrogen
Ammonia	Fecal Coliform	Total Nitrogen
Arsenic	Hardness	Total Phosphorus
Cadmium	Lead	Total Suspended Solids
Calcium	Magnesium	Turbidity
Chlorophyll-a	Nitrate-Nitrite	Water Temperature
Color	Orthophosphate	Zinc
Copper	pH	Sucralose
Dissolved Oxygen	Specific Conductivity	

The Water Quality Monitoring program consists of sampling and analyses performed by a State certified laboratory. The laboratory also remains “on-call” to perform sampling that may be initiated by a specific event or situation as monitored at the District office. The sampling locations for this program are shown in **Figure 1**. The sampling locations are designed to cover the entire District in a cost-effective manner. Staff monitors these locations monthly. Samples are only taken when the District is discharging outside its boundaries.

Figure 1 - Water Quality Sampling Locations



As a requirement of the National Pollutant Discharge Elimination System Municipal Separate Storm Sewer (MS4) Permit, the District is required to update its Water Quality Assessment Program annually. The purpose of this assessment program is to provide information for the District to determine the overall effectiveness of its Stormwater Management Program in reducing stormwater pollutant loadings from its MS4 to receiving water bodies. The water quality information is being used to monitor the District's discharge and will be used in future analysis as needed for the National Pollutant Discharge Elimination System permit.

Areas Outside District Provided Service

Indian Lake Estates is located just west of South Indian River Water Control District and south of Indiantown Road. This development consists of a total of 640± acres, with 320± acres in residential land use and the other 320± acres serving as a water management area. South Indian River Water Control District receives 8 cubic feet per second discharge for the 25-year 3-day storm event, which is discharged into Canal No. 12 via a flashboard riser structure.

Trailwood is a 78.7-acre single family residential development located on the south side of SR 706 in Section 1/Township 41S/Range 41E. It was issued a permit by South Florida Water Management District in 1983. The Trailwood drainage system consists of grassed swales and a storm sewer system directing runoff to a 7.5-acre lake and canal system. The outfall structure was permitted as one 54-inch flashboard riser with a crest at elevation 14.85 feet National Geodetic Vertical Datum and one 4 inch x 8 inch bleeder slot with an invert at elevation 13.5 feet National Geodetic Vertical Datum. Discharge is through 60 Linear Feet of 30-inch diameter Corrugated Metal Pipe to the District's Canal 2. Trailwood was also permitted to construct and operate a 10 cubic feet per second pump station at the control structure. The pump station is operated by the Homeowner's Association. The pump station has a permitted pump on elevation of 15.0 feet National Geodetic Vertical Datum and a pump off elevation of 14.0 feet National Geodetic Vertical Datum.

(f) Five-year Capital Improvement Plan

The following projects have been identified as part of a proposed Five-year Capital Improvement Plan:

- Rehabilitation of Egret Landing Outfall Structure
- Rehabilitation of Palm Beach Country Estates east outfall structures
- Canal Realignments as necessary based on survey data from Jupiter Farms
- Rehabilitation/Replacement of bridge over the C-18 Canal pending Bridge Inspection Report scheduled for Fiscal Year 25-26.
- Culvert crossing in the East Turnpike Canal
- Maintenance Platform at the box culvert under I-95

South Florida Water Management District Permits will be required for any proposed changes to permitted elevations or configurations of control structures and outfall culverts or enlarging of the canal system. Florida Department of Transportation permits will be required for proposed work within their right-of-way.

(g) District Administrative Structure

The Board of Supervisors is the governing body of the District. It is composed of five (5) Supervisors who are elected by the landowners in the District for staggered three-year terms. There is an organizational meeting in October of each year, at which time the Supervisors elect a President, Vice-President, a Secretary and a Treasurer which may or may not be members of the Board.

Chapter 298, Florida Statutes, establishes the specific duties and powers of the Board of Supervisors. The Board of Supervisors establishes policies and adopts resolutions in a manner which is consistent with the desires of the landowners of the District. The Board of Supervisors may enter into interlocal agreements with other governmental agencies. The Board is responsible to ensure that all of its members and its staff perform their duties. Other duties of the Board are to keep records of all proceedings, report to the landowners at the Annual Meeting on work that has been performed during the year, and to appoint and provide for the compensation of the Staff. The Board also has the authority to remove officers and employees.

An organizational chart for South Indian River Water Control District is included as **Exhibit 4**. The Board of Supervisors employs an Executive Director and a Supervisor of Operations who take care of the day-to-day operations of the District. The District also employs Professional staff who report directly to the Board of Supervisors and who coordinate their activities with the Executive Director.

The Board of Supervisors appoints a District Engineer, whose duties are outlined in Chapter 298.16, Florida Statutes. The District Engineer has control of the engineering work in the District. The District Engineer is the Board's advisor on technical matters dealing with the operation and maintenance of the District Works and Capital Improvement Projects. As such, the District Engineer is thoroughly familiar with the works of the District and has access to other engineers with special expertise as the need may arise to support the proper standard of care with regard to engineering matters.

The Board of Supervisors employs a District Treasurer, whose duties are outlined in Chapter 298.17, Florida Statutes. The District Treasurer has control of the funds of the District. The District Treasurer is the Board's advisor on financial matters.

The Board of Supervisors employs an attorney to act for the District and to advise said Board, whose duties are outlined in Chapter 298.18, Florida Statutes. The District Attorney has control of all legal matters involving the District. The District Attorney advises the Board of Supervisors, all officers, employees or agents of said District and Board, and generally looks after and attends to all matters of a legal nature for the Board and District. When the Board may deem it necessary, it may, by and with the advice of said attorney, and under the like terms and conditions as above set forth, employ another attorney.

(h) Agreements between Water Control District and other Governmental Entities

All water resource related agreements between South Indian River Water Control District and other governmental entities are included in the Public Facilities Report (2025).

(i) Engineer's Report

Copies of previous Engineer's Reports prepared for plan adoptions or revisions are included as Exhibits to the Public Facilities Report (2025).

(j) Budget and Revenue Sources

For the Fiscal Year 2023-2024, revenue from assessments equaled \$4,073,495 with revenues from all sources totaling \$4,696,159. The expenditures for FY 23-24 were \$4,268,234.

List of Exhibits

Exhibit 1 – District Boundary Map

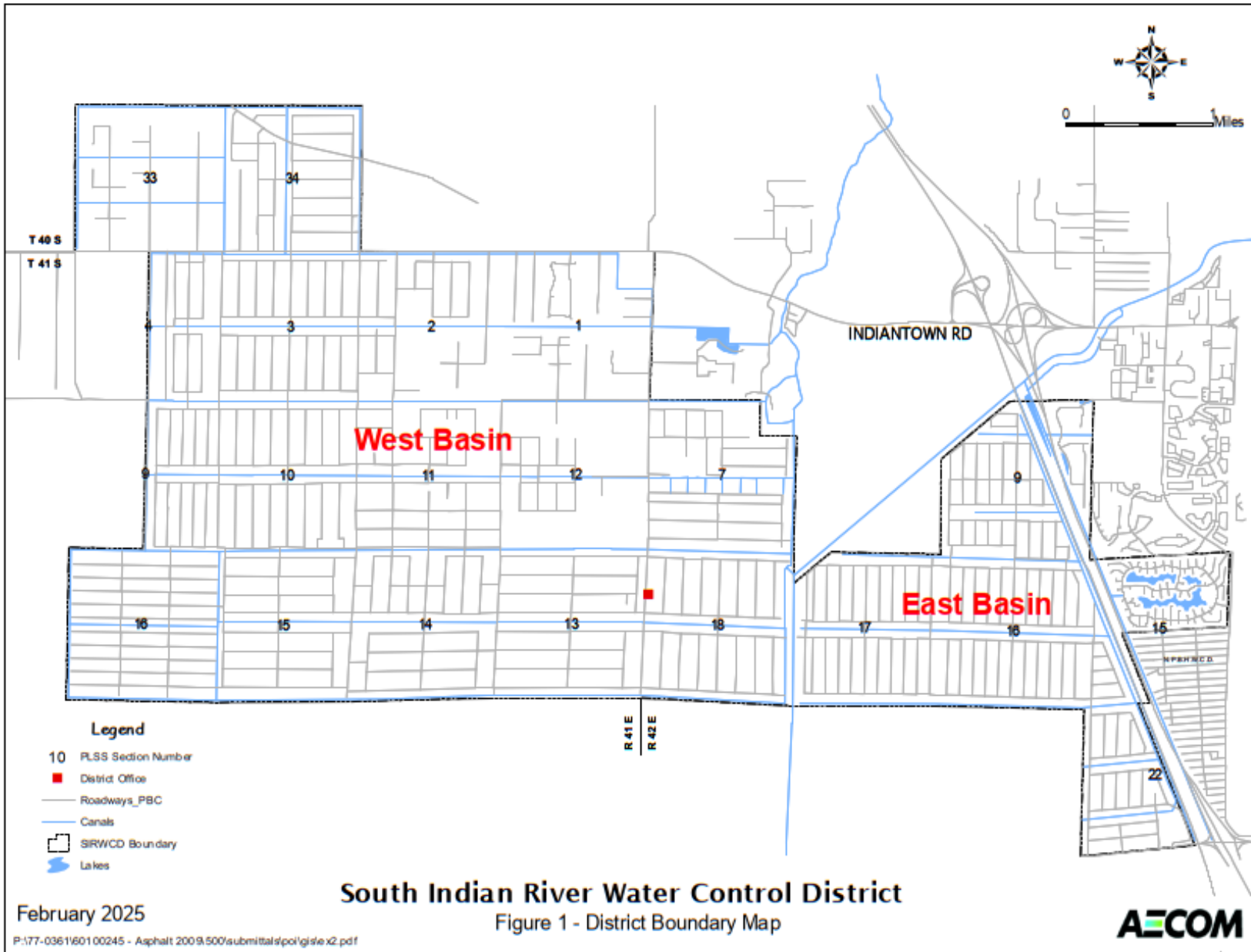
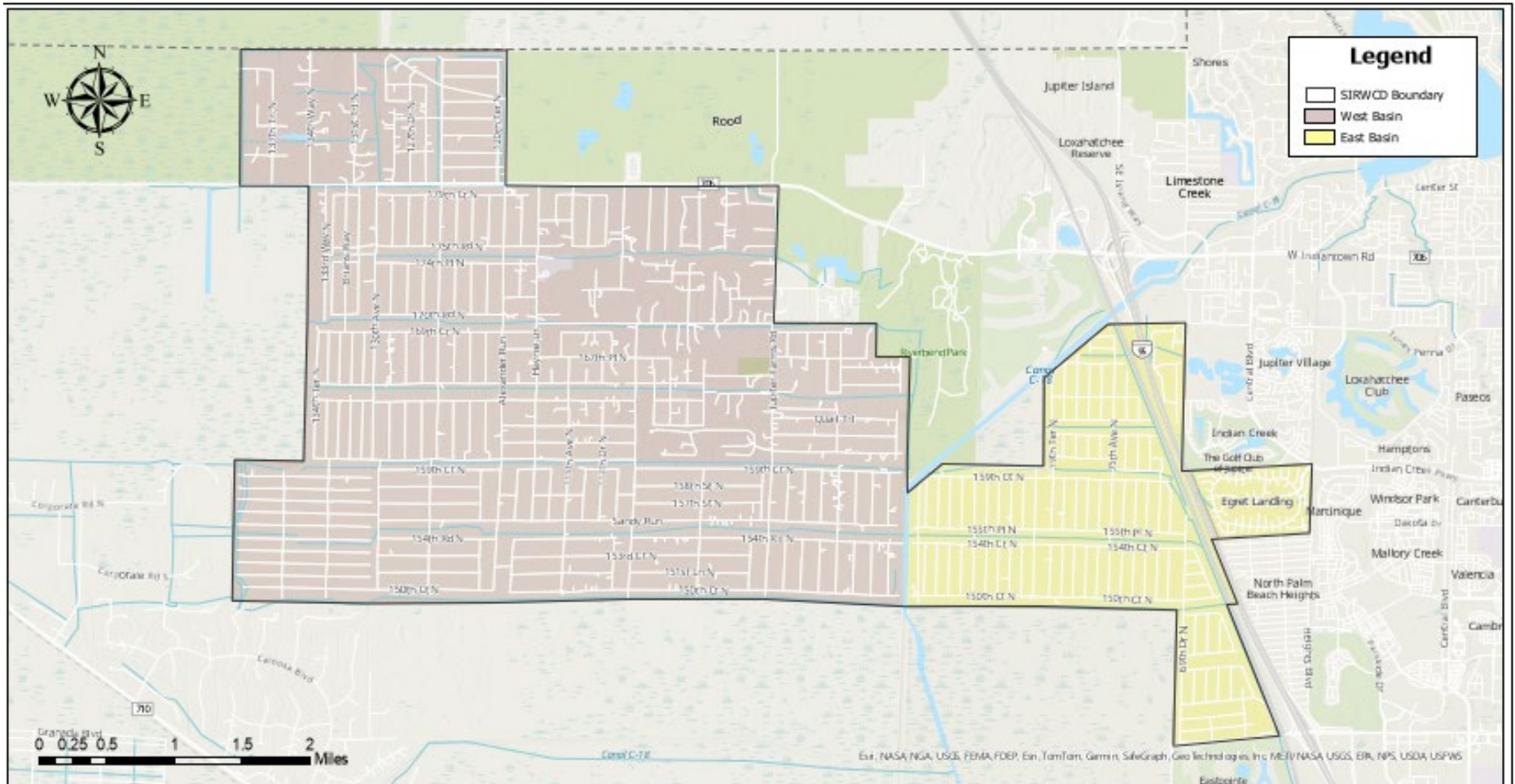


Exhibit 2 – Taxing Units



Taxing Unit Map



Exhibit 3 – Land Use Map

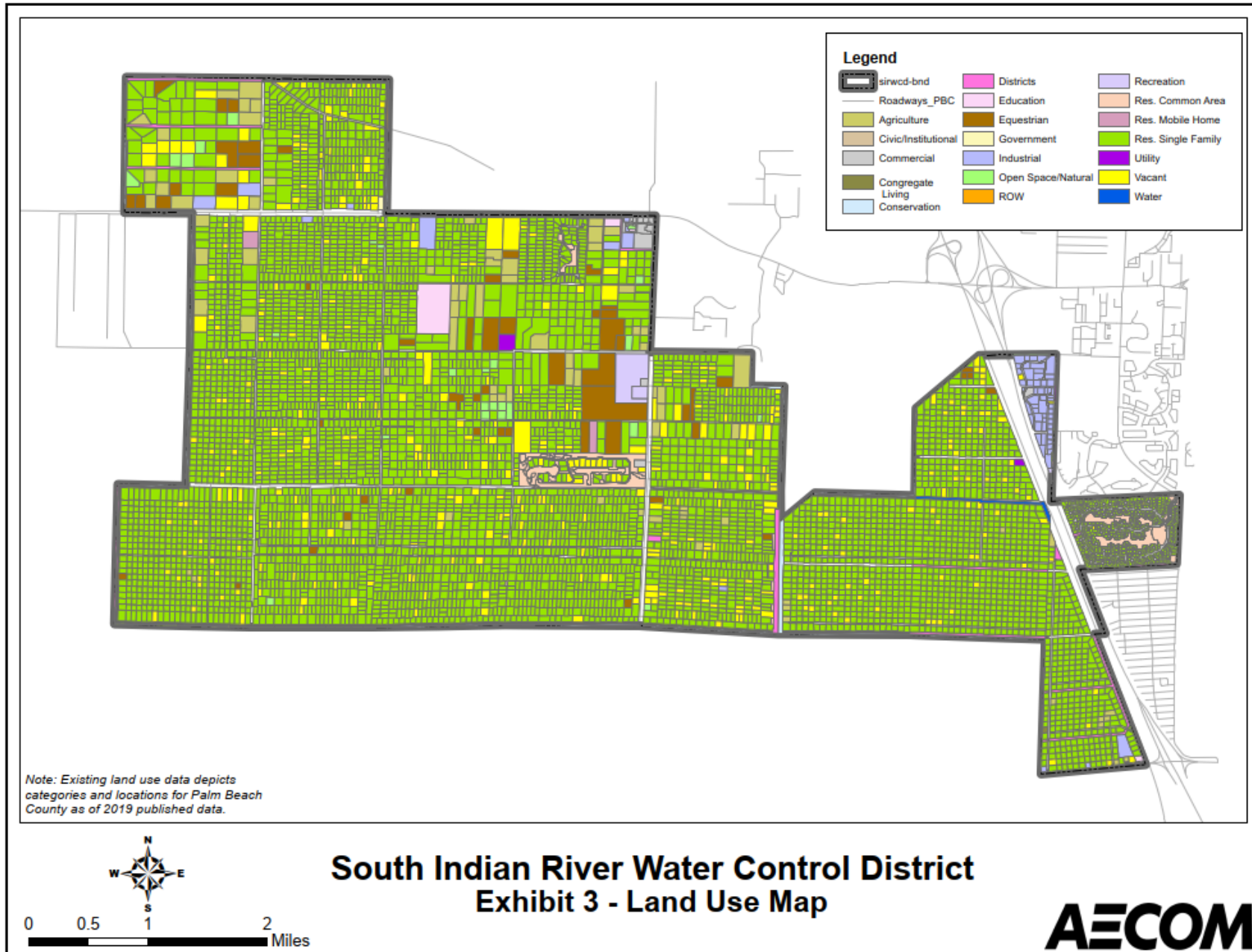


Exhibit 4 – Organizational Chart

South Indian River Water Control District Organizational Chart

